

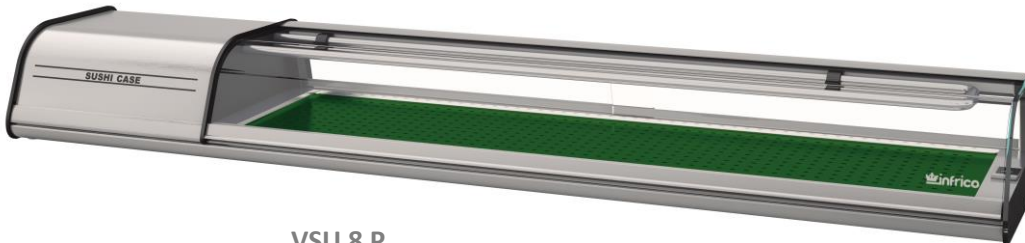
MODELS: **VSU 4P** **VSU 6P** **VSU 8P** **SHOW CASES:**
Sushi, fish and seafood display case



VSU 4 P



VSU 6 P



VSU 8 P

General Strengths

- ✓ **Sanitation.** When cleaning the unit make sure the drain hose is routed to a floor drain.
- ✓ **Control systems.** Higher precision in managing temperature settings. Greater ability to adjust of temperature ranges as per the end user's requirement.
- ✓ **100% Tested.** All condenser units are tested 100%, in helium chambers to refrigerant leak detections.
- ✓ **Certified.** AENOR audited and certified by internationally recognized firm. ISO 9001:2008 (Quality); ISO 14001:2004 (Environmental); OSHAS 18001:2007 (Prevention and Worker Safety). Audited and Certified by INTERTEK for compliance with UL 471 and NSF 7.
- ✓ **Lighting.** LED lighting in the canopy and cabinet sides reduces the energy consumption by 80% and 90% compared to a traditional bulb.

MODELS	Dimensions (mm)			Nº Doors	Surface Exposure (m ²)	Chamber Volume (L)	Gross Volume (L)	Regimen Temp. (°C)	Ref.	Ref. Weight (gr.)	Net Weight (Kg.)
	Widht	Depth	High								
VSU 4 P	1268	410	230	2	0,23	16,1	120	-1°C / +1°C	R134a	270	47
VSU 6 P	1620	410	230	2	0,34	23,8	153	-1°C / +1°C	R134a	380	50
VSU 8 P	1972	410	230	2	0,46	32,2	186	-1°C / +1°C	R134a	500	52

MODELS: VSU 4P	VSU 6P	VSU 8P	SHOW CASES: <i>Sushi, fish and seafood display case</i>
-----------------------	---------------	---------------	---

STANDARD FEATURES

➤ Exterior

- Exterior profile decoration of silver anodized aluminium,
- Front lift-up security tempered glass system,
- Independent exhibition from the condensing unit group (built-in group).

➤ Interior

- Interior of AISI 304 Stainless Steel,
- Inner water-drainage of the display,
- Illumination LED in the profile superior.

➤ Insulation

- Insulation by free CFC's polyurethane foam high-pressure injected with density 40 Kg/m³,
- Zero ODP and Low GWP.

➤ Doors

- Suspended sliding rear doors.

➤ Refrigeration

- Temperature regulated by a digital controller,
- Manual defrost,
- System of ventilated condensation
- System of Cold board+Tube Evaporation,
- Evaporation coil in the roof of the display,
- On the models with remote condensing unit, the incorporated control panel and the condensing unit should be placed no further than 2 meters away,
- Climate class 4 (30°C, 55HR).

➤ Electrical

- Electrical connection: 220 V / 1 ph / 50 Hz



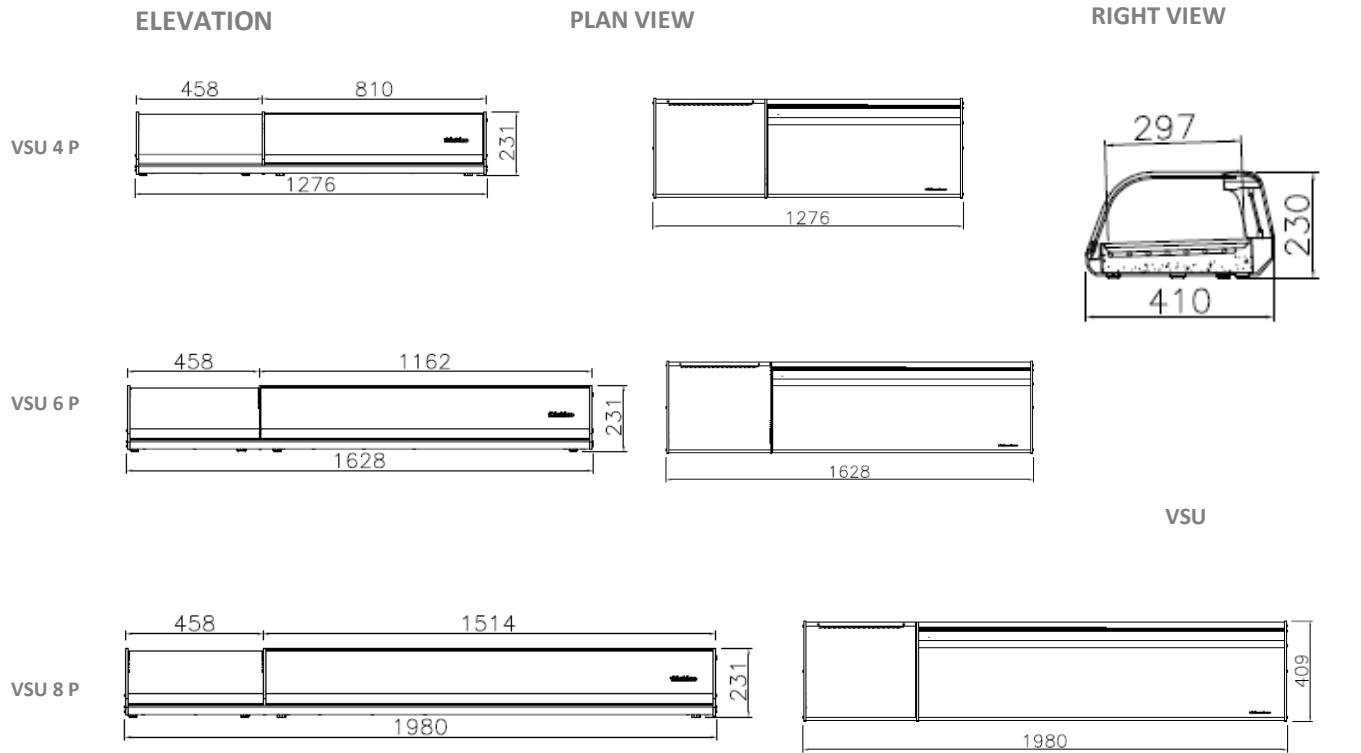
OPTIONAL

- Electrical connection 220 V / 1 ph / 60 Hz.,
- Electrical connection 115 V / 1 ph / 60 Hz.

MODELS	Dimensions Palletizing (mm)			Crated Weight (Kg.)	Power (W)	Comp. (HP)	Cooling Power (W to -10°C)	Cons. (kWh/24h)	Inten. (A)	Level Noise (dB)	Container 20'/40'/40'HC	Trailer
	Width	Depth	High									
VSU 4 P	1310	470	340	51	130	1/6	140	2,1	0,9	50,1		
VSU 6 P	1700	470	340	55	190	1/6	140	3,0	1,14	50,1		
VSU 8 P	2000	470	340	59	200	1/6	140	3,2	1,4	50,1		

MODELS: **VSU 4P** **VSU 6P** **VSU 8P** **SHOW CASES:**
Sushi, fish and seafood display case

PLAN VIEW



CONNECTIONS

MODELS	A (mm)	B (mm)	C (mm)	D (mm)	D (mm)
VSU 4 P	30	69,5	70,6	-	-
VSU 6 P	30	69,5	70,6	-	-
VSU 8 P	30	69,5	70,6	-	-

